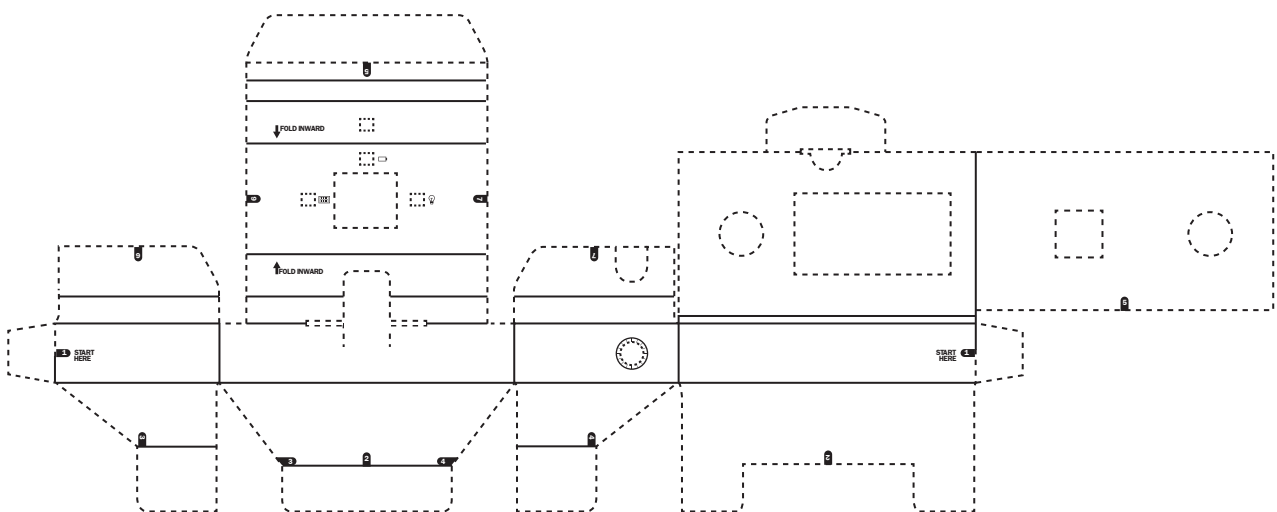


BUILD YOUR OWN LIGHT BOX

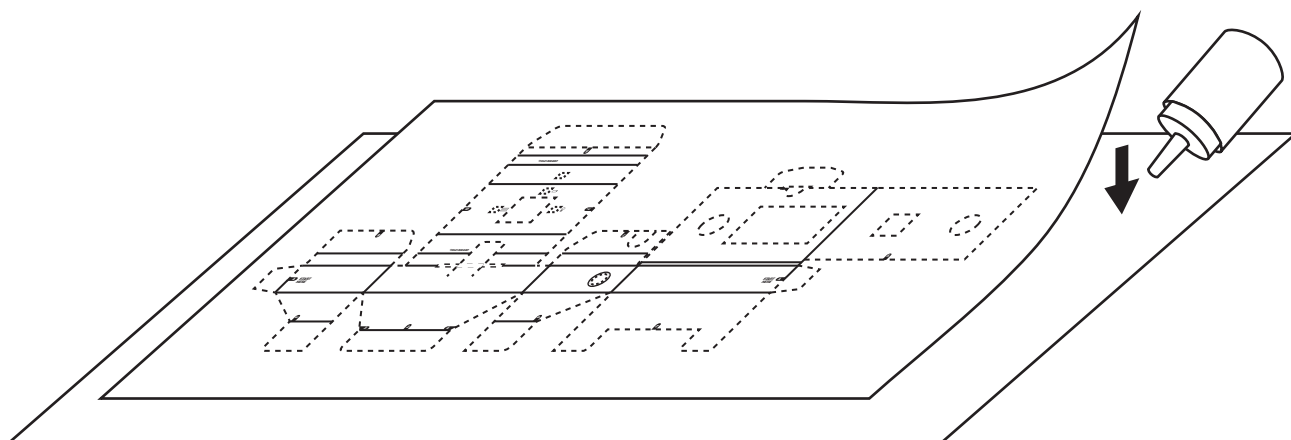
MATERIALS

Cutter, ruler, tape, glue, bottle, cardboard box, straw, and bits kit.

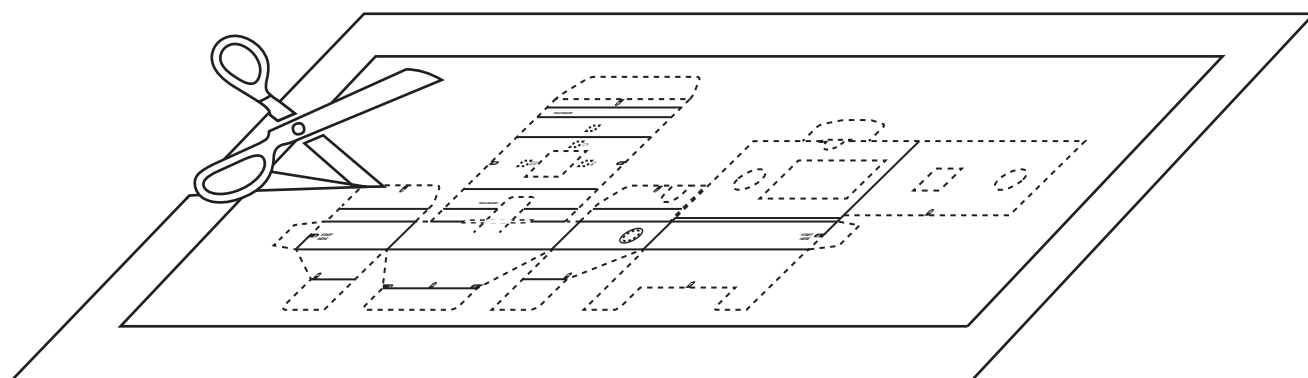
- 1 Print Light Box template on recommended paper (three A3 sheets or six A4 sheets).



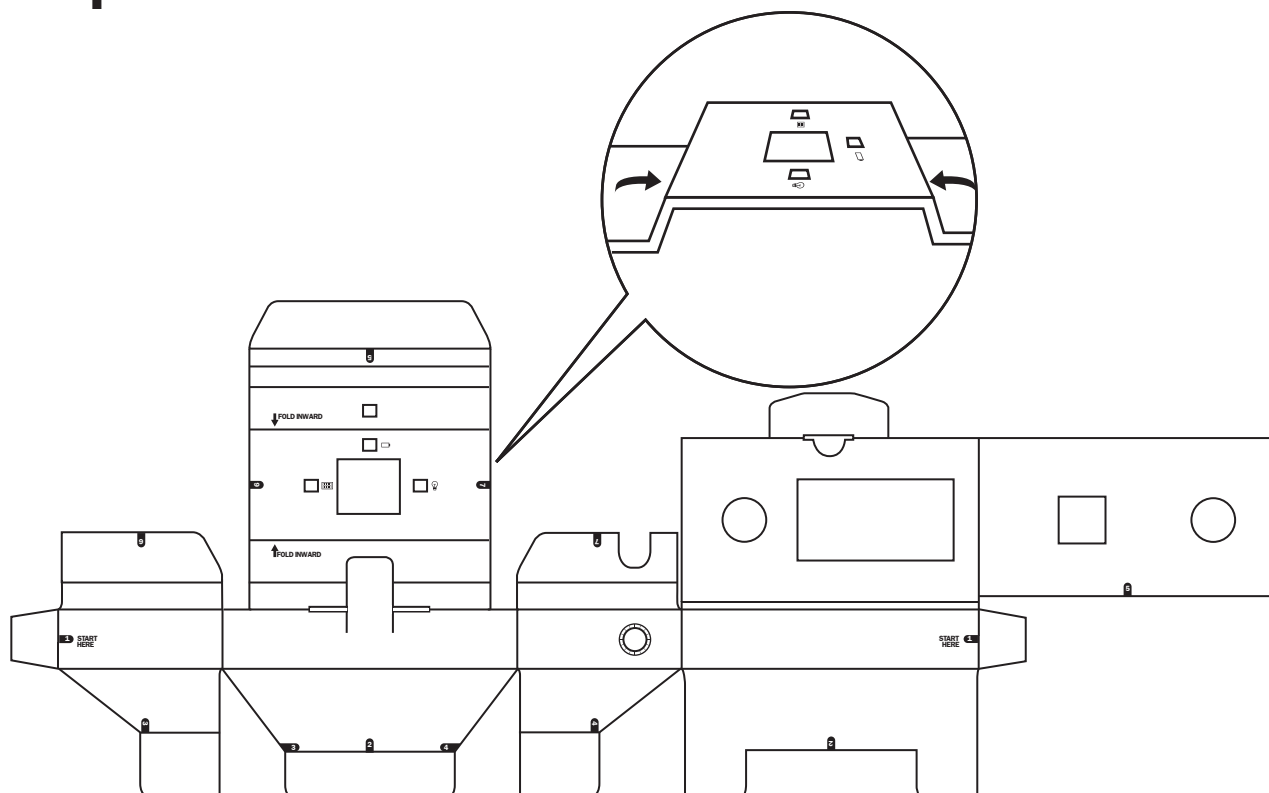
- 2** Glue the template onto your cardboard box.



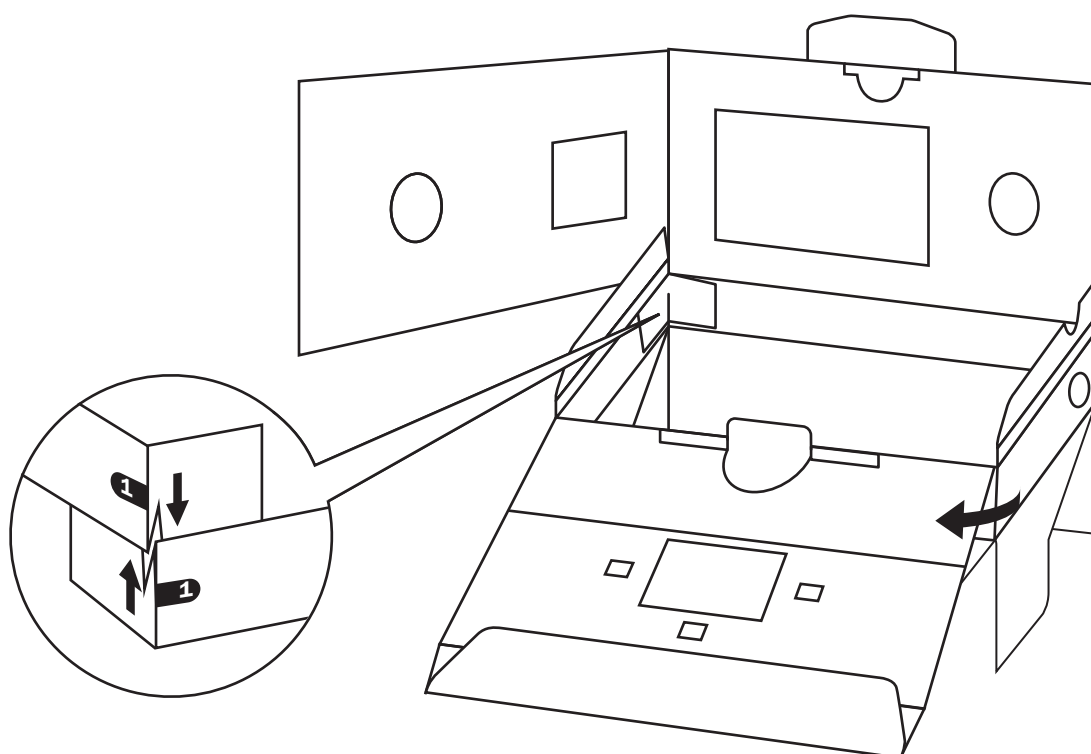
- 3** Cut along all the dotted lines.



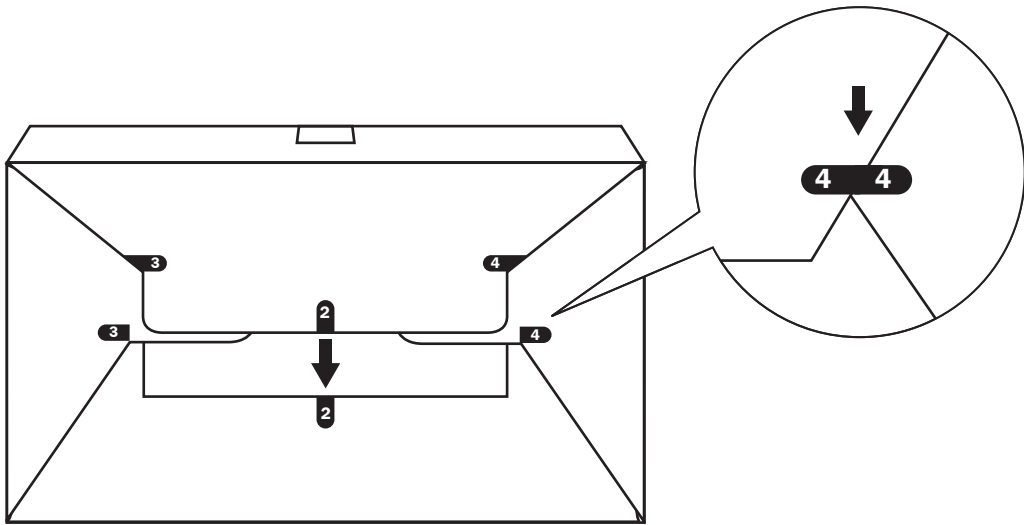
- 4** Fold the two lines marked with an arrow inward. Fold all other solid lines outward.



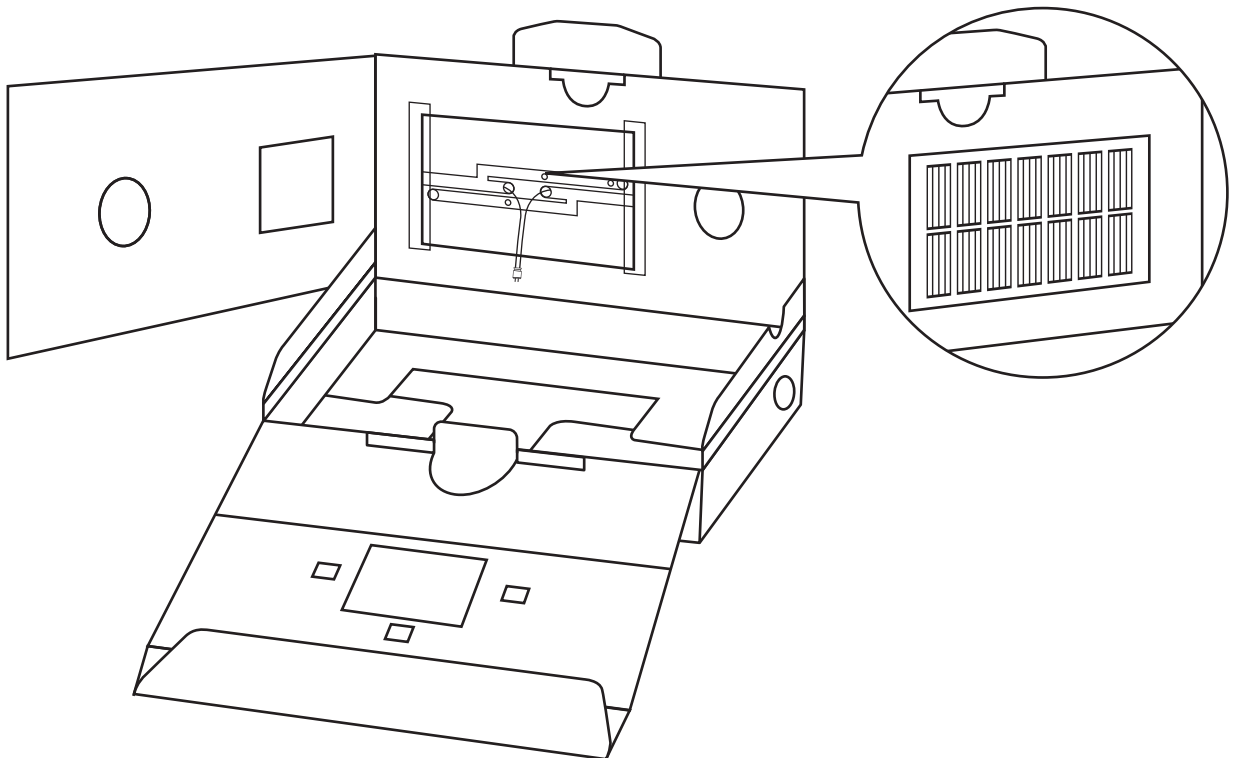
- 5** Connect flaps 1 and 1 by folding inward. Overlap slit sides and slide in to lock. Make sure the flaps are inside the box.



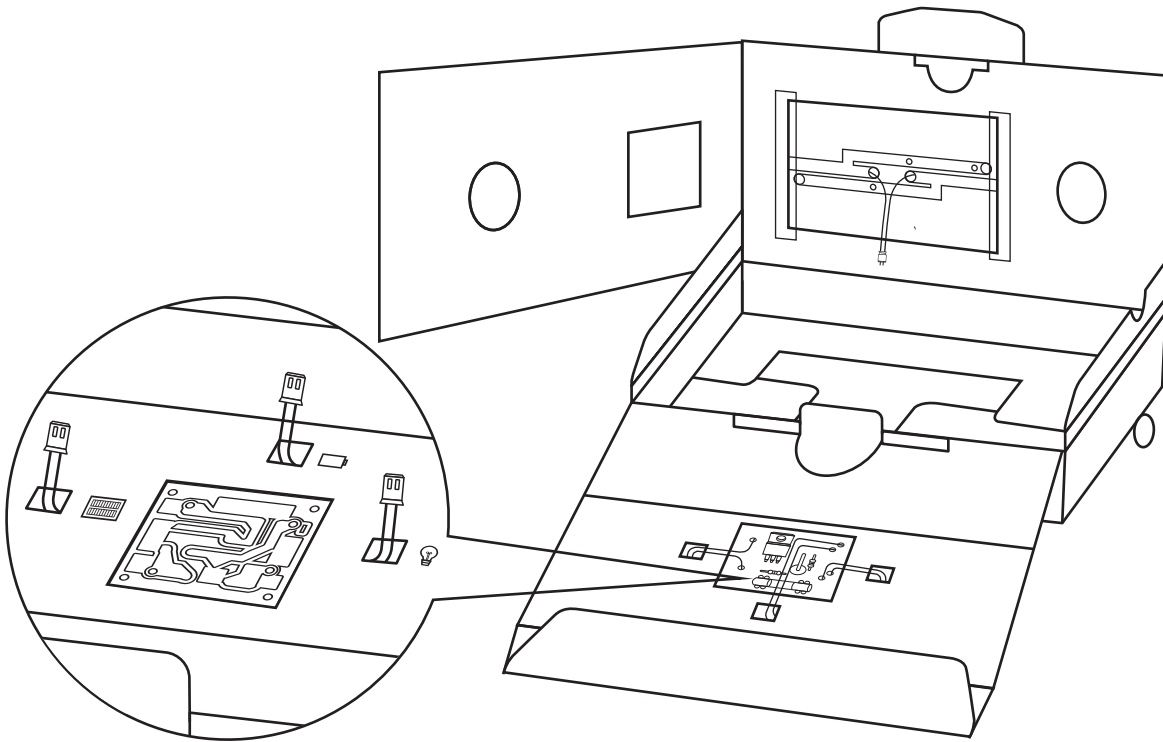
- 6** Tuck flaps in and make sure all the numbers align.



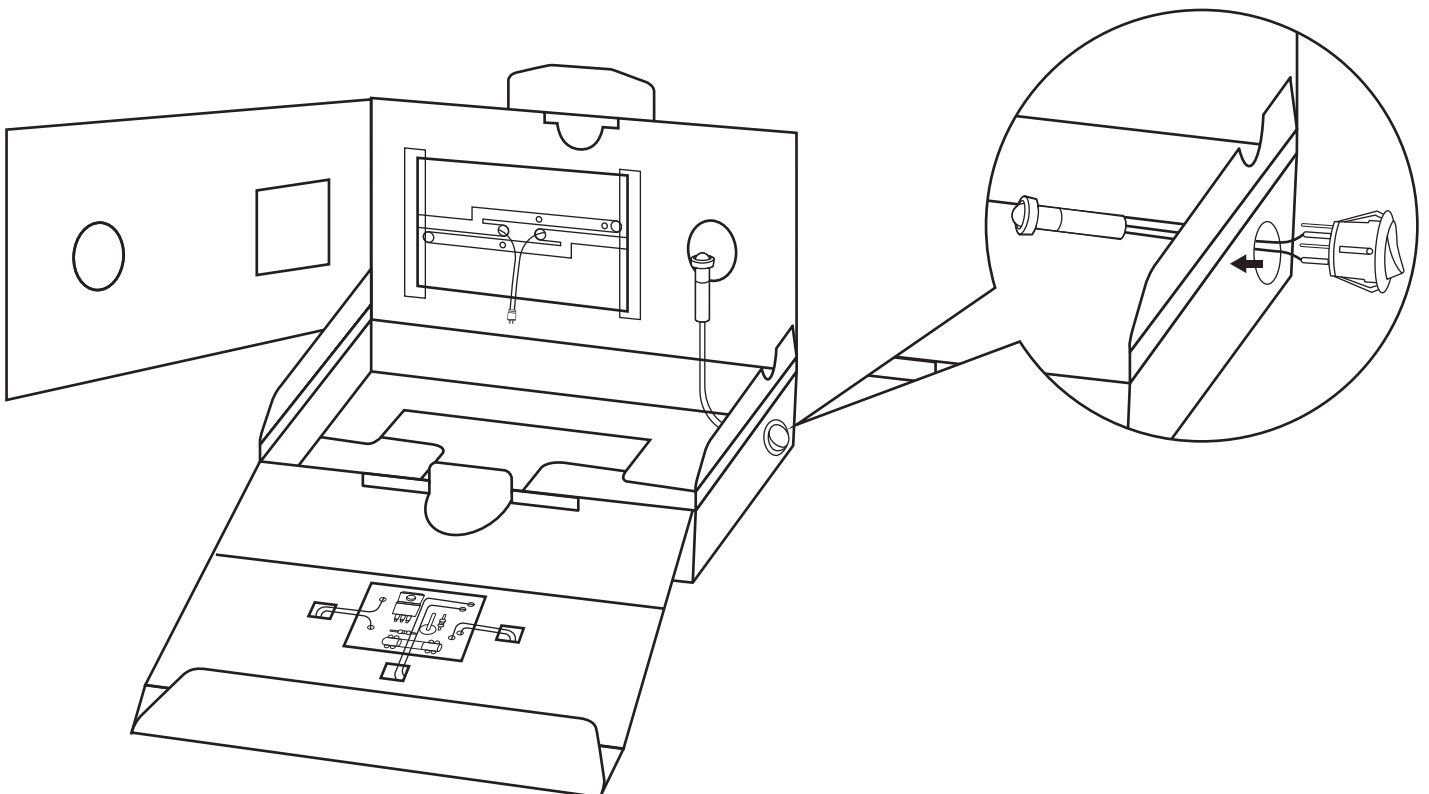
- 7** Use tape to attach the solar panel onto the upper flap.



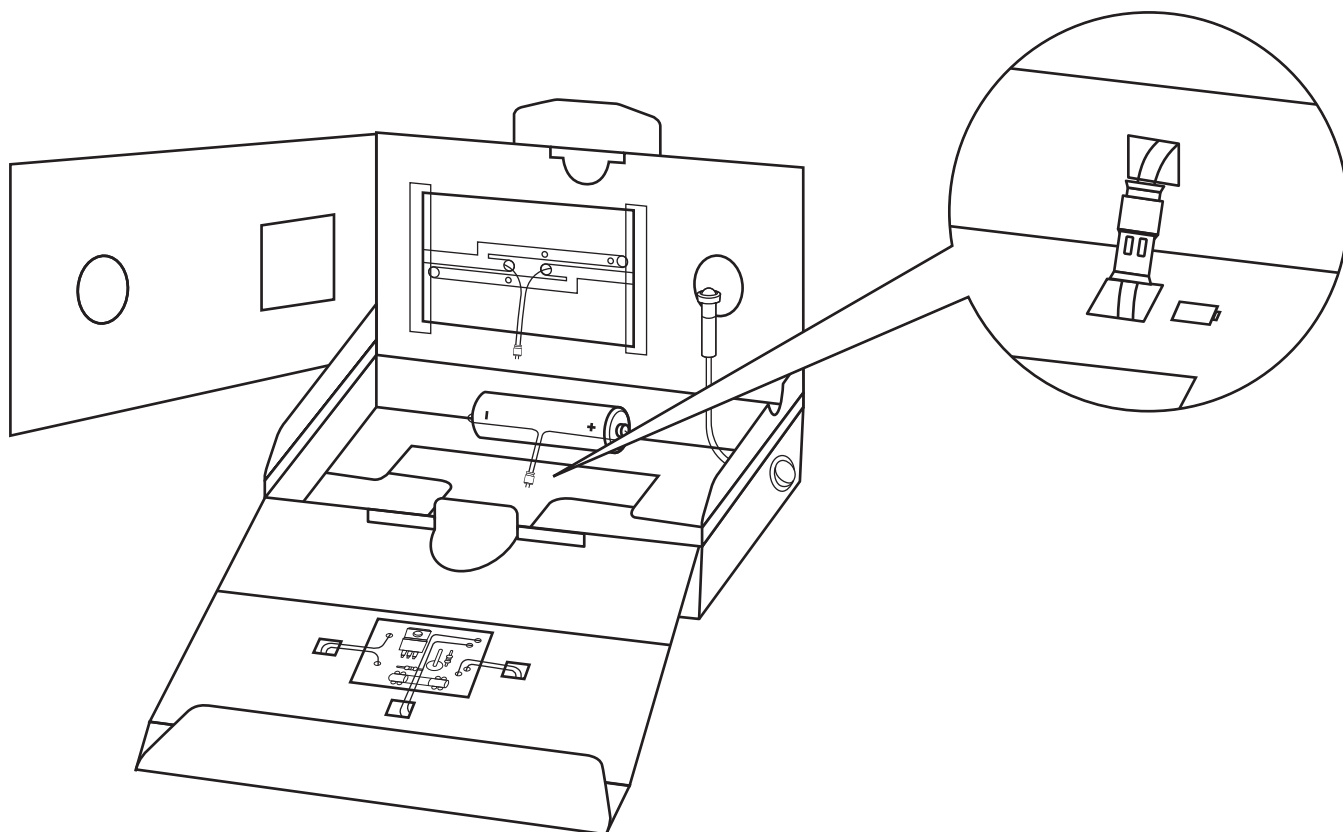
- 8** Insert the circuit board through the central slot. Insert the wires through their respective holes.



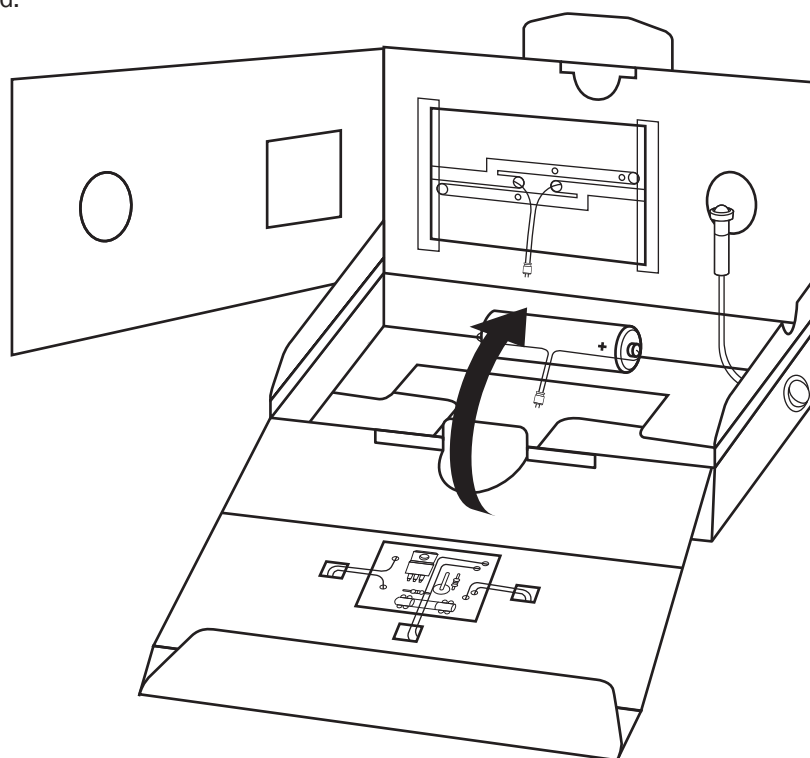
- 9** Insert the light and connector through the switch hole. Put the switch into the hole to close it.



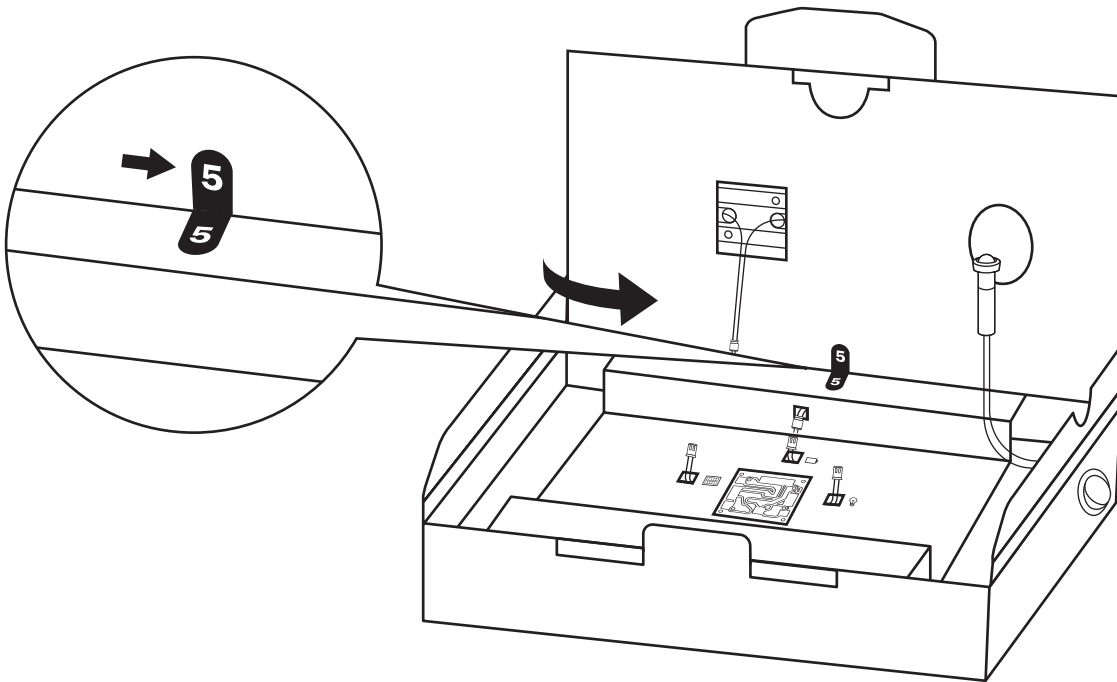
10 Hide the battery under the flap, but insert its wire through the hole.



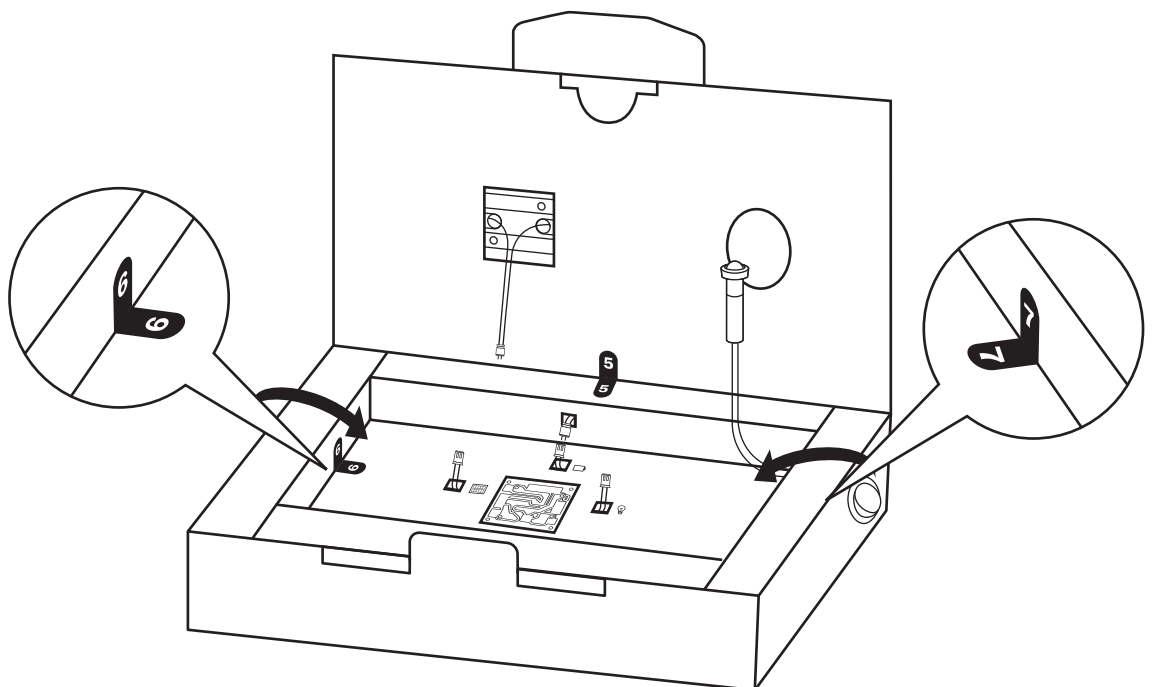
11 Fold inward.



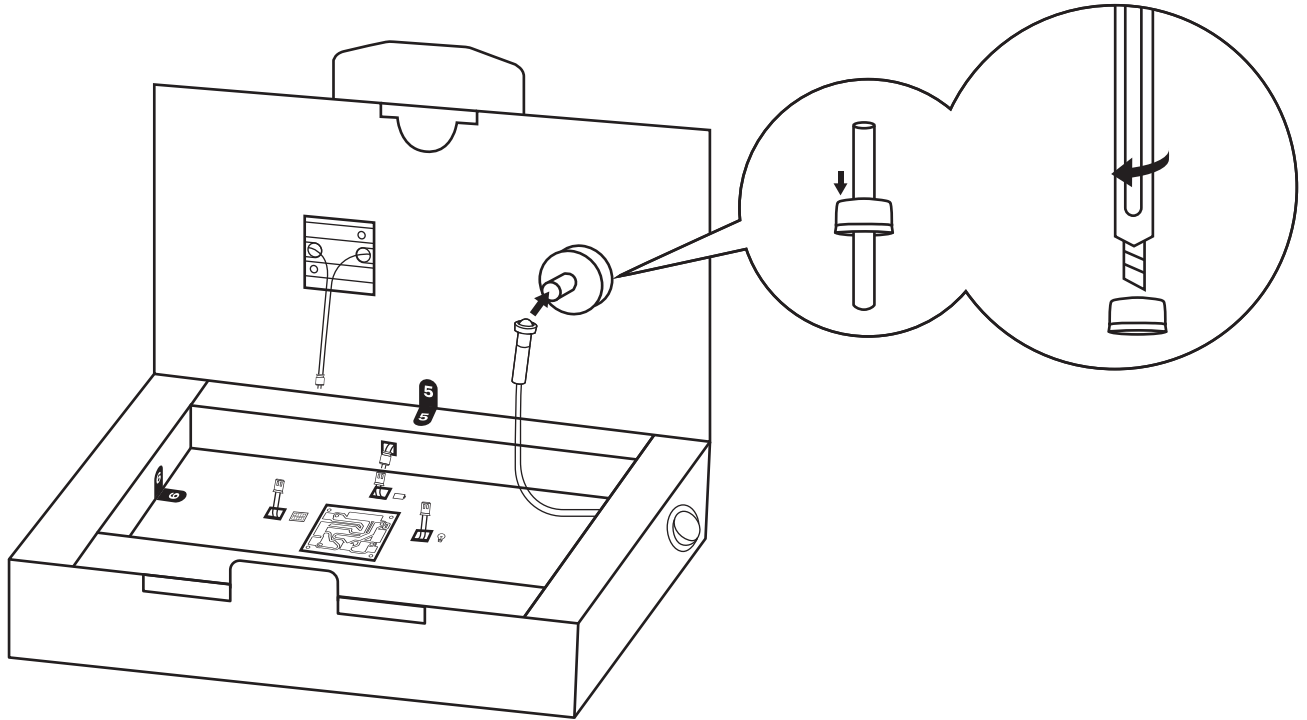
12 Fold the flap inside to connect to 5.



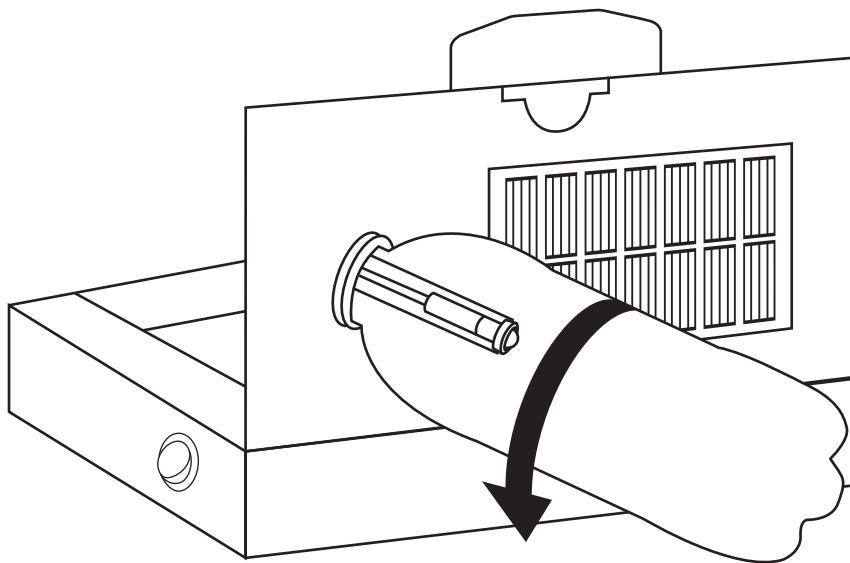
13 To complete, fold 6 and 7.



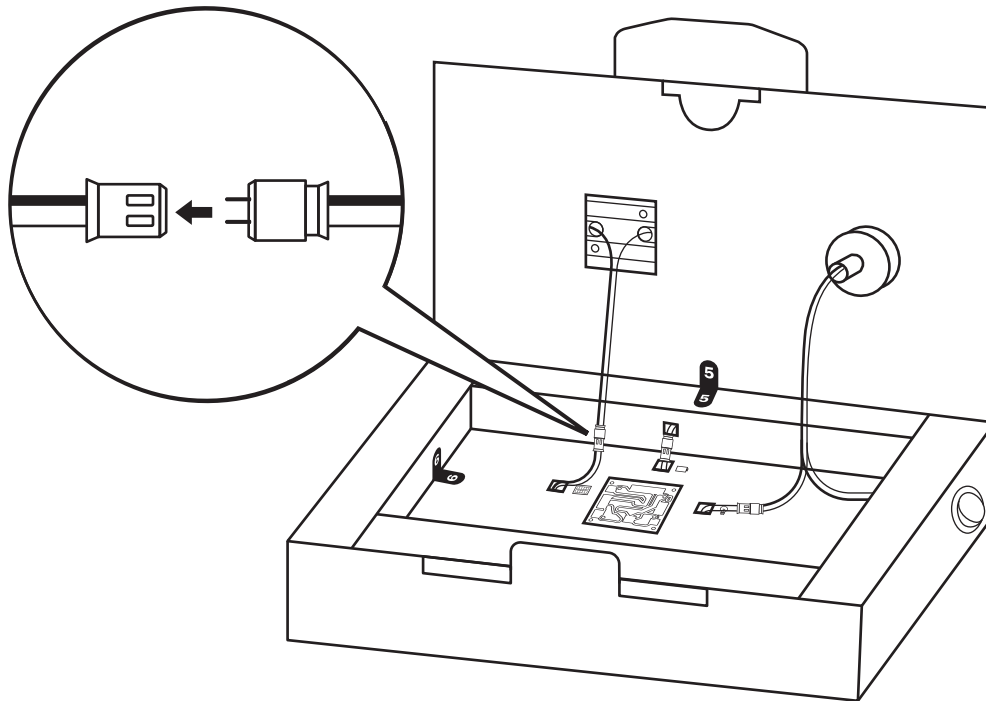
14 Make a hole in the bottle cap so that you can insert the light through the straw.



15 Screw the bottle in to complete the light assembly.



- 16** Connect the wires together.
Note: Make sure the colors connect.



- 17** Switch the light on.
Note: Charge the solar panel for 14 hours.

